

# WINCROSS®

## What's New Guide

---

Version 17



Version 17

Copyright 1994–2017, The Analytical Group, Inc.

Editor: Mandy Pollack

All rights reserved. No part of this book may be reproduced in any form or by any electronic means, electronic or mechanical, including photocopying, scanning, recording or any information storage and retrieval system, without the express permission of The Analytical Group, Inc.

# Table of Contents

New Feature Highlights for Version 17 .....	4
WinCross Executive .....	5
New Glossary Commands of LABEL, CODEVALUE and DELETE .....	7
New Glossary Features .....	8
Use Glossary Transformations with ExpressTabs, Express Tables/Banner Templates from Variable Data ...	10
New Wider Viewing Area for Variable Names with Express Tables from Variable Data .....	10
Double-Click Table Creation for Single Variables .....	11
Sample Balancing Level Limits Increased for Iterative Proportional Fitting Technique .....	12
Save Variable Data Files with Value Labels in Place of Code Values .....	13
Enhanced Text Report Options .....	14
Job Logo Group Box of Enhanced Text Reports .....	15
Suppress Filter Rows in Excel Reports .....	16
Assign Banner Column Width by Row/Update Banner Column Width by Column .....	17
New Auto-Size Banner Column Option .....	19
New Seq. # Column for Banners .....	20
Create a Zip File for Email Support .....	21
New Significance Indicator Order Options .....	22
Ctrl+Right Arrow Completion of Partial Variable Names .....	22
Run Time Display Options .....	23
Compatibility with Latest Version of SPSS® .....	24

# What's New in WinCross Version 17

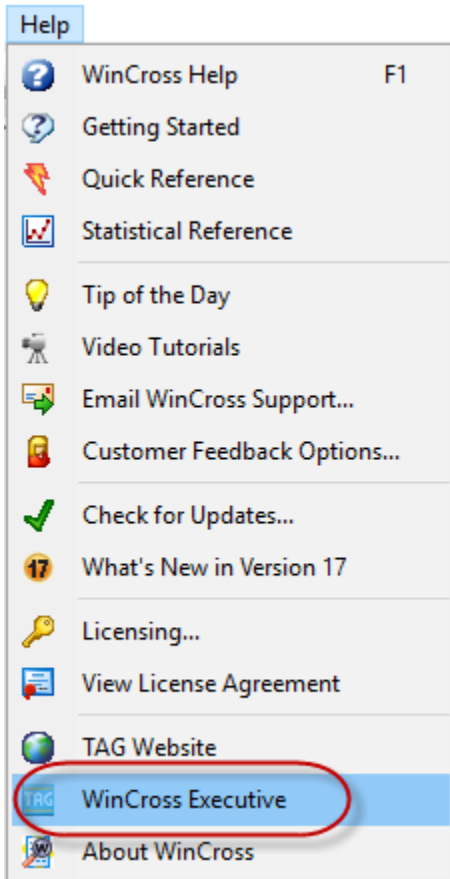
We are excited about the many enhancements in WinCross 17. From the introduction of our new web-based file sharing and **Express Tab** solution to new **Glossary** commands for variable data and additional features for our **Express Tables**, we are confident that you will continue to be pleased with WinCross as your go-to cross tabulation software.

## New Feature Highlights for Version 17:

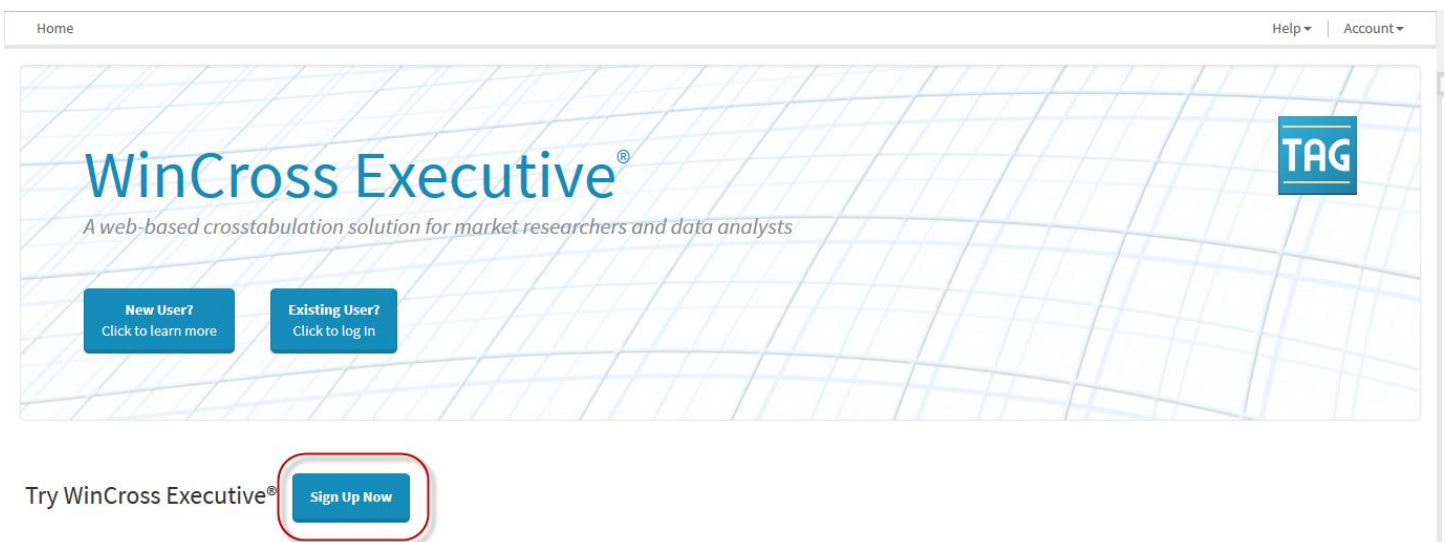
- Link directly to **WinCross Executive**, our new web-based file sharing and **Express Tab** solution from the **Help** menu.
- New **Glossary** commands of **LABEL**, **CODE VALUE** and **DELETE** provide another level of data management for your variable data files.
- Several new features provide additional flexibility while working in the **Glossary**.
- **Glossary transformations** can now be used to build and process express tables and banner templates for greater control over table design and results.
- The **Express Tables from Variable Data** dialog now features a wider viewing area for variable names and lets you create a quick-and-easy table by double-clicking a single variable in the list.
- New limits of 50 variables and 100 code values per variable offer greater flexibility when defining levels for **Sample Balancing** using the **Iterative proportional fitting technique** option.
- Variable data can now be saved with **Value labels** in place of **Code values** providing a different view of your data.
- Your **Enhanced Text Report Options** for running tables are now saved to the *jobname.run* file associated with your job, eliminating the frustration of trying to remember which options you selected previously.
- The **Job logo** group box on the **Enhanced Text Reports** tab of **Job Settings** and **Profile Settings** is now hidden until you click on **Job logo1** or **Job logo 2** in the **Report elements** list increasing the **Enhanced Text Reports** preview area.
- You can now easily suppress filter rows on your Excel reports without having to adjust table options or rerun tables.
- Banner column width for **Plain Text Reports** can now be assigned and updated by row/column when using the **Create Banners from Tables** option of **Setup|Banners** reducing banner editing time.
- The new **Auto-Size Selected Columns** option added to the **Columns** menu of the banner editor is a quick way to auto-size selected banner columns.
- Our new **Seq. #** column for banners can help in identifying specific banners in job files with many banners and for use with **Memorized Reports**.
- Resolve customer support issues more quickly with the aid of our new feature for **Email WinCross Support** – create a zip file containing helpful information logs and configuration files for attachment to your support email.
- **Significance indicators** can now be displayed alphabetically within comparison group, in alphabetic order across comparison groups or in order by significance levels offering greater flexibility for table presentation.
- Using **Ctrl+Right Arrow** shortcut for completion of partial variable names now includes variables defined or declared in the **Glossary** helping cut down on banner and table creation time.
- Report time can now be displayed as 24-hour or AM/PM time for your convenience.
- Compatibility with the latest version of SPSS.

## WinCross Executive

You can now link directly to **WinCross Executive**, our new web-based file sharing and **Express Tab** solution from the **Help** menu in **WinCross 17**.



Selecting **Help|WinCross Executive** takes you to our new **WinCross Executive** website ([www.wincrossexecutive.com](http://www.wincrossexecutive.com)) where you can sign-up for a trial account.



Once you create an account and log-in, you can start analyzing your data and validating your assumptions. You will have access to uploading, downloading and sharing files, exploring “*what if*” scenarios and quick-and-easy table creation using **Express Tabs** along with our user-friendly data modification options.



**My Drive** is the folders and files tree structure of **WinCross Executive** and allows you to upload, download, rename, move, delete and replace files.

**Express Tabs** allows you to create tables by selecting variables from your **WinCross Executive** dataset as table rows and banner columns. You can also add netting, filters, weighting and significance testing to your crosstab reports.

**Datasets** provides a list of datasets owned by or shared to you and lets you export your dataset, with any changes made, as an SPSS data file.

**Variables** makes it easy to rename or hide variables, edit variable labels and add, delete or edit new code values and value labels.

See the **WinCross Executive** online **Help** topics “*My Drive*”, “*Express Tabs*”, “*Datasets*”, and “*Variables*” for more detailed information about using our new web-based file sharing and **Express Tab** solution.

## New Glossary Commands of LABEL, CODEVALUE and DELETE

These new **Glossary** commands provide another level of data management for your variable data file.

**LABEL** lets you assign a label or change an existing label for a variable.

**Syntax:**

LABEL variable=label

**Usage:**

You can permanently assign new labels to variables from the data file by using the **LABEL** command and the **Save Data As** option of **Setup|Glossary Variables**.

**Example:**

LABEL INCOME=Household Income

**CODEVALUE** lets you change the corresponding value labels assigned to code values for variables in the data file.

**Syntax:**

CODEVALUE variable code value=value label

CODEVALUE variable code value=value label,code value=value label,code value=value label

**Usage:**

You can permanently assign new labels to corresponding code values for variables from the data file by using the **CODEVALUE** command and the **Save Data As** option of **Setup|Glossary Variables**.

**Examples:**

CODEVALUE Q1 1=< 1 hr per wk

CODEVALUE Q1 1=<1 hr per wk, 2=1-3 hrs per wk, 3=4-6 hrs per wk

**DELETE** lets you delete a variable(s) from the data file either permanently or temporarily.

**Syntax:**

DELETE variable

DELETE variable,variable,variable

**Usage:**

You can permanently delete variables from the data file by using the **DELETE** command and the **Save Data As** option of **Setup|Glossary Variables**.

**Examples:**

DELETE Q6A\_1

DELETE Q6A\_1,Q6A\_2,Q6A\_3,Q6A\_4

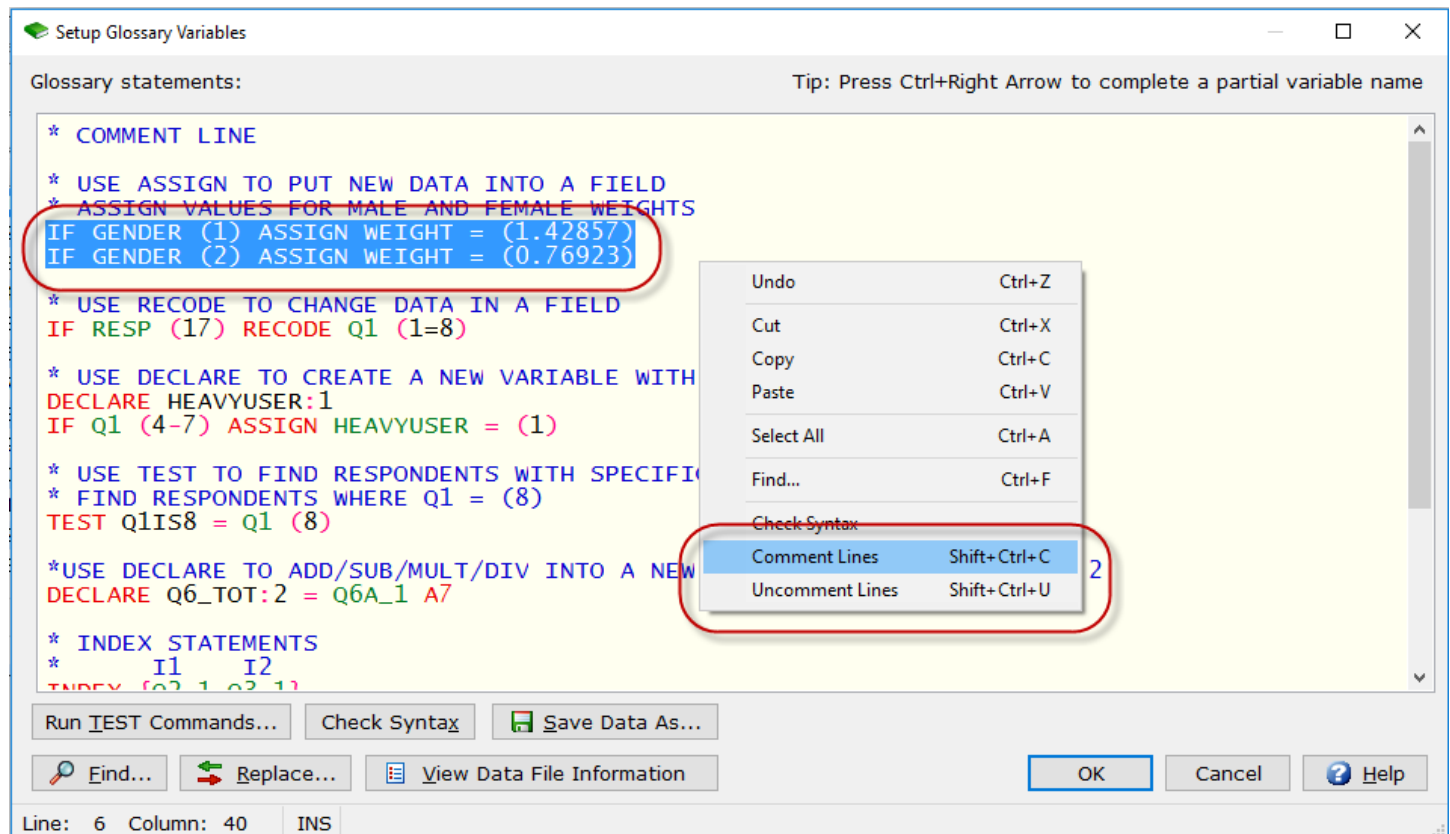
See the WinCross online **Help** topics "*Glossary Variables*", "*LABEL*", "*CODE VALUE*", and "*DELETE*" for more detailed information about these new **Glossary** commands.

## New Glossary Features

Two new features provide additional flexibility while working in the **Glossary**.

**Setup|Glossary Variables** now allows you to comment or uncomment lines in the **Glossary** by highlighting one or more lines.

These two new options have been added to the right-click context menu on the **Setup Glossary Variables** dialog.

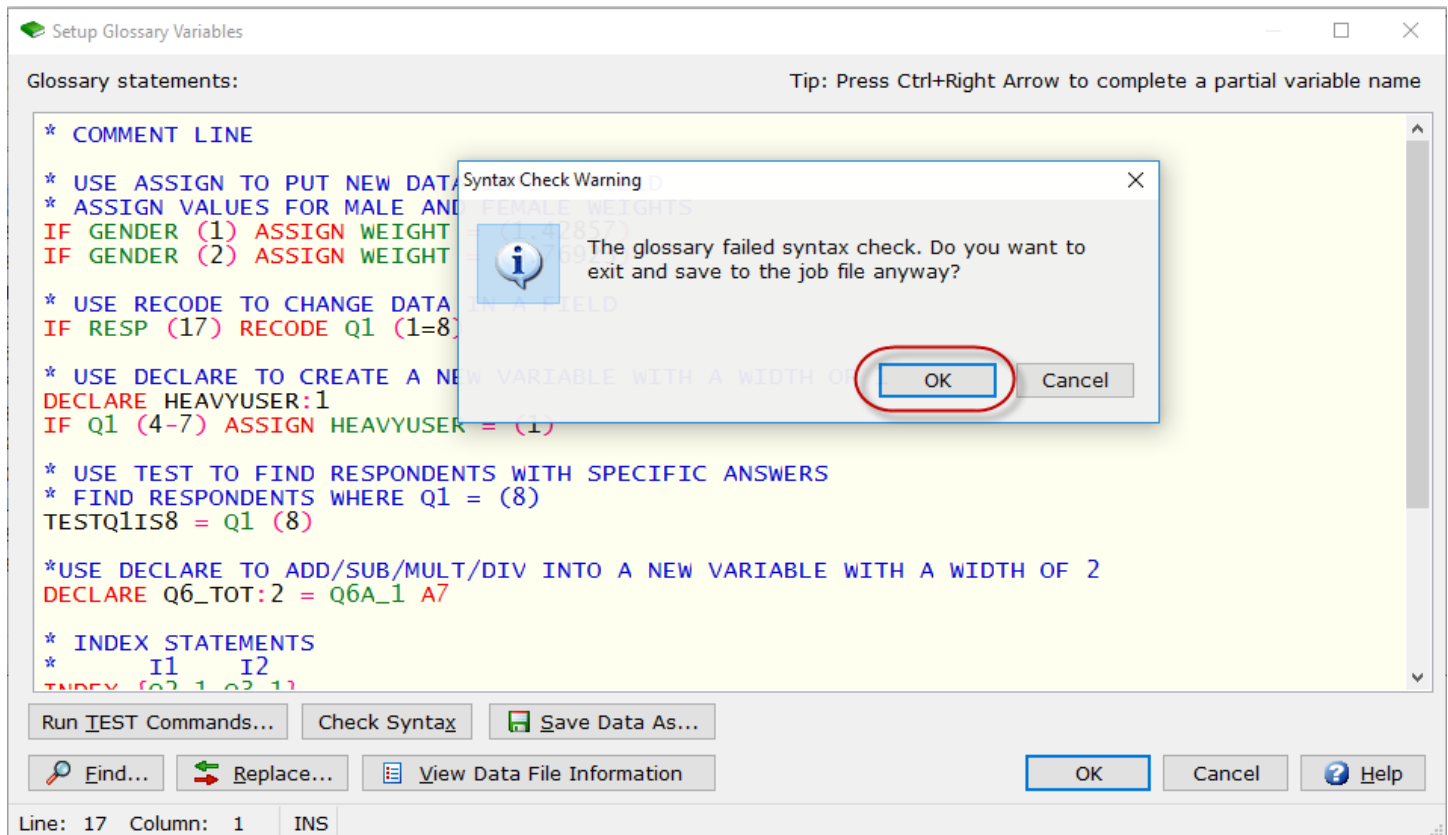


**Comment Lines** will add an asterisk in column 1 of the highlighted lines and **Uncomment Lines** will remove any highlighted lines that begin with an asterisk (the asterisk does not have to be in column 1, but it must be the first character of the line).



**Setup|Glossary Variables** will also now allow you to exit the **Setup Glossary Variables** dialog without fixing syntax errors.

This allows you to continue working on your job and to resolve these syntax errors later using the **Glossary** or editing the job file using **View|Job File**.



When the **OK** button is selected to exit the **Setup Glossary Variables** dialog and syntax errors are present, you will now receive a **Syntax Check Warning** message after the warning for the actual syntax error is presented. This new message warns you that the **Glossary** failed the syntax check, but now gives you the opportunity to exit the **Glossary** anyway.

See the WinCross online **Help** topic "*Glossary Variables*" for more detailed information about these new **Glossary** options.

## Use Glossary Transformations with ExpressTabs, Express Tables/Banner Templates from Variable Data

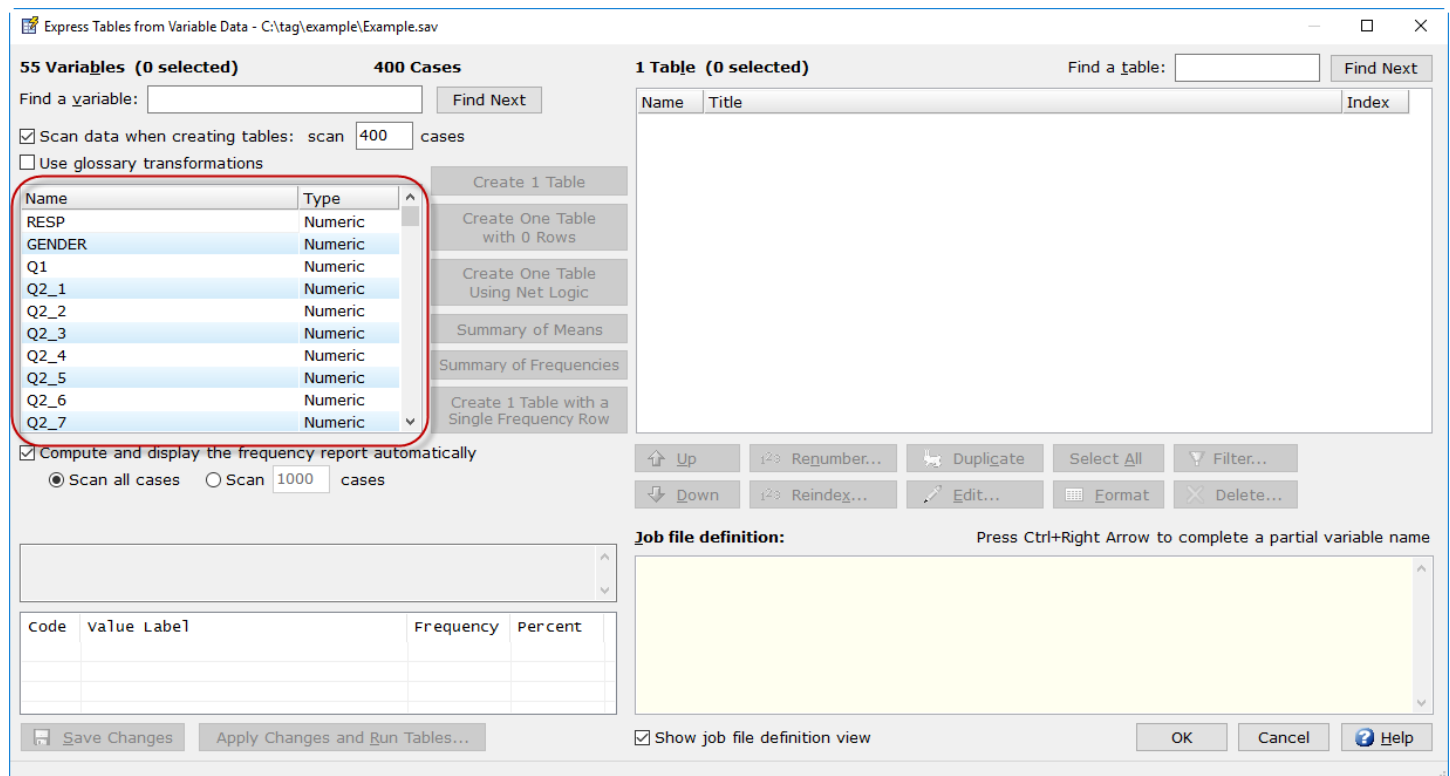
The **Use glossary transformations** option has been added to **Run|ExpressTabs**, **Setup|Express Tables from Variable Data** and **Setup|Banner Templates from Variable Data**. This option has always been available for running tables or frequencies and will now allow you to include new variables, delete current variables or change the results of tables created and/or processed. Glossary statements might include **DELETE**, **DEFINE**, **DECLARE**, **LABEL**, **CODEVALUE**, **RECODE**, etc. and would affect which variables display in the list and/or how the tables are created.

The WinCross default is to **Use glossary transformations**.

See the WinCross online **Help** topics “*Run|ExpressTabs*”, “*Express Tables from Variable Data*”, and “*Banner Templates from Variable Data*” for more detailed information about this new option.

## New Wider Viewing Area for Variable Names with Express Tables from Variable Data

The **Express Tables from Variable Data** dialog now has a wider viewing area for variable names in the **Variable** list.



This change is helpful when you have data files with long variable names and variable names that are similar.

See the WinCross online **Help** topic “*Express Tables from Variable Data*” for more detailed information about creating tables using this menu option.

## Double-Click Table Creation for Single Variables

**Express Tables from Variable Data** now lets you create a table from a single variable by simply double-clicking on the variable in the list. This action creates a table that is equal to selecting a variable in the list and choosing the **Create 1 Table** option.

Express Tables from Variable Data - C:\tag\example\Example.sav

55 Variables (0 selected)      400 Cases      1 Table (0 selected)

Find a variable:  Find Next

☒ Scan data when creating tables: scan  cases

☐ Use glossary transformations

Name	Type
RESP	Numeric
GENDER	Numeric
Q1	Numeric
Q2_1	Numeric
Q2_2	Numeric
Q2_3	Numeric
Q2_4	Numeric
Q2_5	Numeric
Q2_6	Numeric
Q2_7	Numeric

Create 1 Table

Create One Table with 0 Rows

Create One Table Using Net Logic

Summary of Means

Summary of Frequencies

Create 1 Table with a Single Frequency Row

☒ Compute and display the frequency report automatically

☒ Scan all cases    ☐ Scan  cases

Up Down

Job file definition

See the WinCross online **Help** topic “*Express Tables from Variable Data*” for more detailed information about creating tables using this menu option.

## Sample Balancing Level Limits Increased for Iterative Proportional Fitting Technique

When using the **Iterative proportional fitting technique** of Sample Balancing, you can now use up to 50 variables and 100 code values per variable when defining levels.

**Run Sample Balancing**

1. Choose one or more variables to weight

Variable List

#	Abbreviated	Variable Name
50	Q8	Q8
51	Q9	Q9
52	Q10	Q10
53	EDUCATION	EDUCATION

Find a variable:  Find Next

Variables to Weight

#	Abbreviated	Variable Name
54	INCOME	INCOME

Variables added: 1 | Maximum: 50

2. Set the target percents for each code value for the selected variable

#	Code Values (10)	Value Label	Observed Frequency	Observed Percent	Target Percent
1	1	Under \$30,000	128	32.00	10.00
2	2	Between \$30,000 and \$39,000	92	23.00	10.00
3	3	Between \$40,000 and \$49,000	43	10.75	10.00
4	4	Between \$50,000 and \$59,000	43	10.75	10.00

Clear Percents Combine Levels Dissolve Level(s) Set Value Label... Total: 100%

3. Options

Variable to which weight will be written: WEIGHT

Sample size options

- ☒ Calculate to filtered sample size
- ☐ Calculate to reduced sample size
- ☐ Calculate to a custom sample size

Custom sample size: 400

Cases

Records per case: 1

Cases to write: 400

Iterations

Goodness of fit: 0.00005

Maximum passes: 10

☐ Use goodness-of-fit minimization technique

☐ Replace negative weights with: 0.001

☒ Use iterative proportional fitting technique (this technique never produces negative weights)

☒ Use glossary transformations ☐ Run Filter...

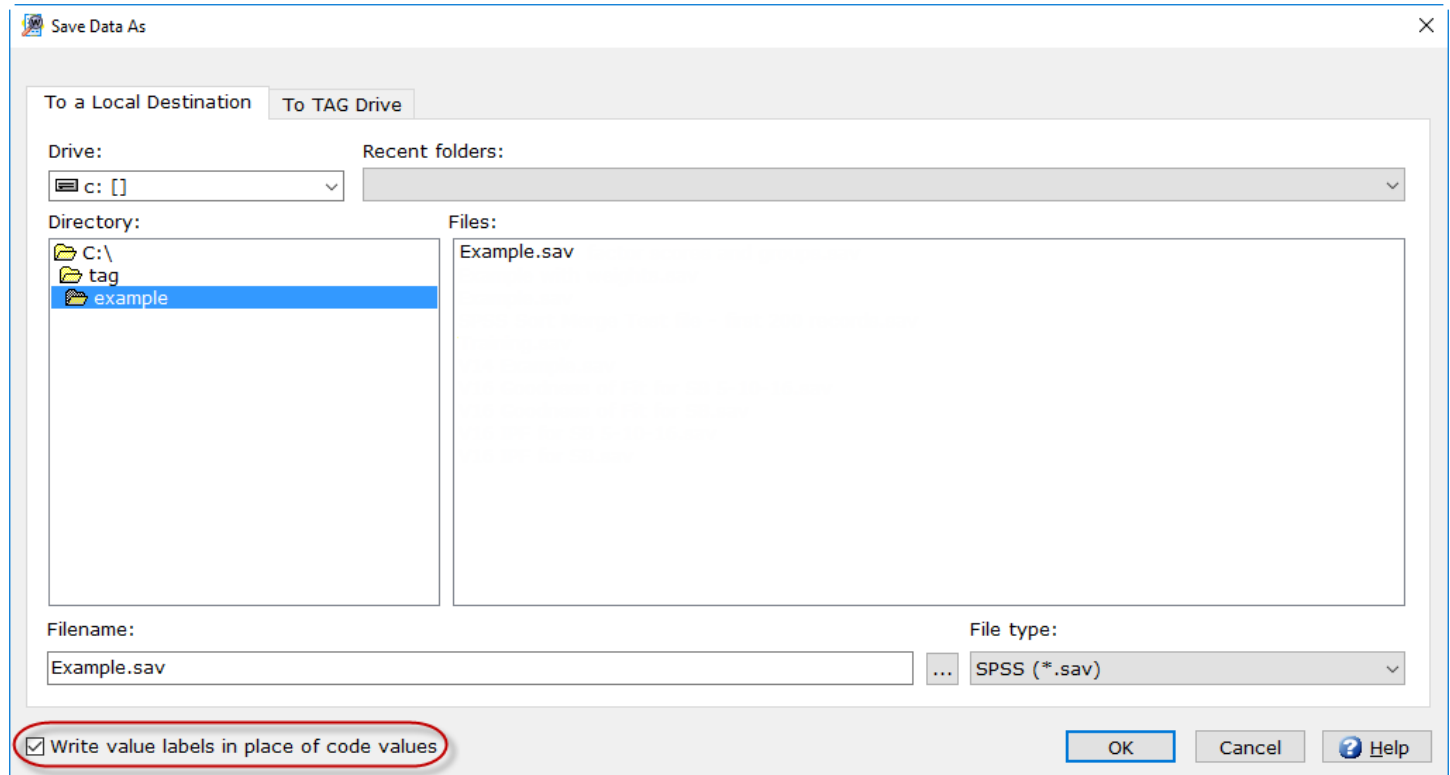
Restore Defaults Run Save Load... Save As... Cancel Help

Weight variable width: 8 Missing values: 0

See the WinCross online **Help** topics “*Sample Balancing: Variable Data*” or “*Sample Balancing: ASCII Data*” for more detailed information about using **Sample Balancing**.

## Save Variable Data Files with Value Labels in Place of Code Values

Your variable data file can now be saved with **Value Labels** in the place of **Code Values** using **File|Save|Save Data As**.

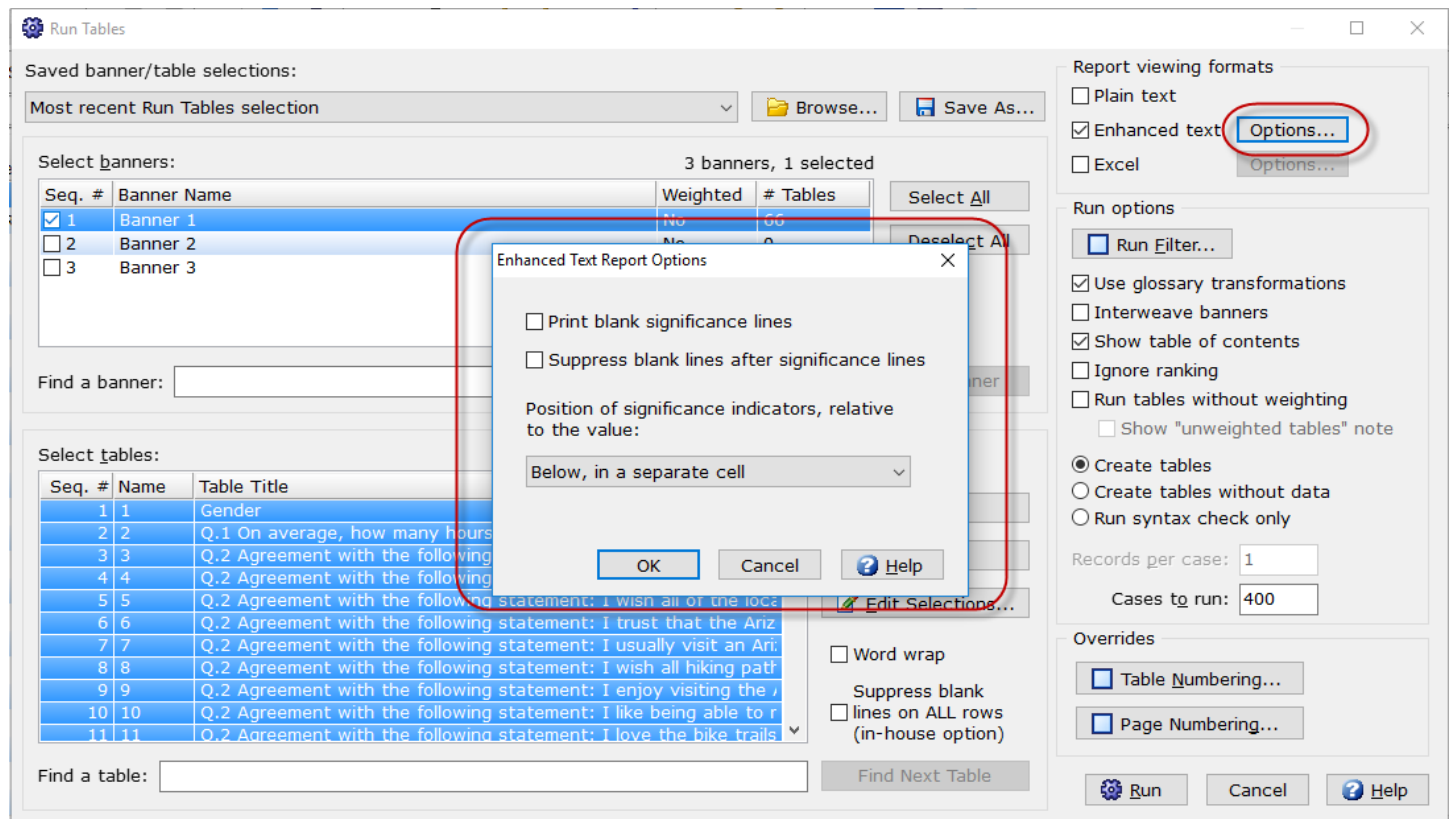


This new option provides a different view of the data. Each variable format and width is automatically modified to accommodate the value labels.

See the WinCross online **Help** topic “*Save Data As*” for more detailed information about this new option.

## Enhanced Text Report Options

**Enhanced Text Report Options** are now saved to the *jobname.run* file. This is the same file that saves the last banner/table selections and is written in the same folder where your job file resides.

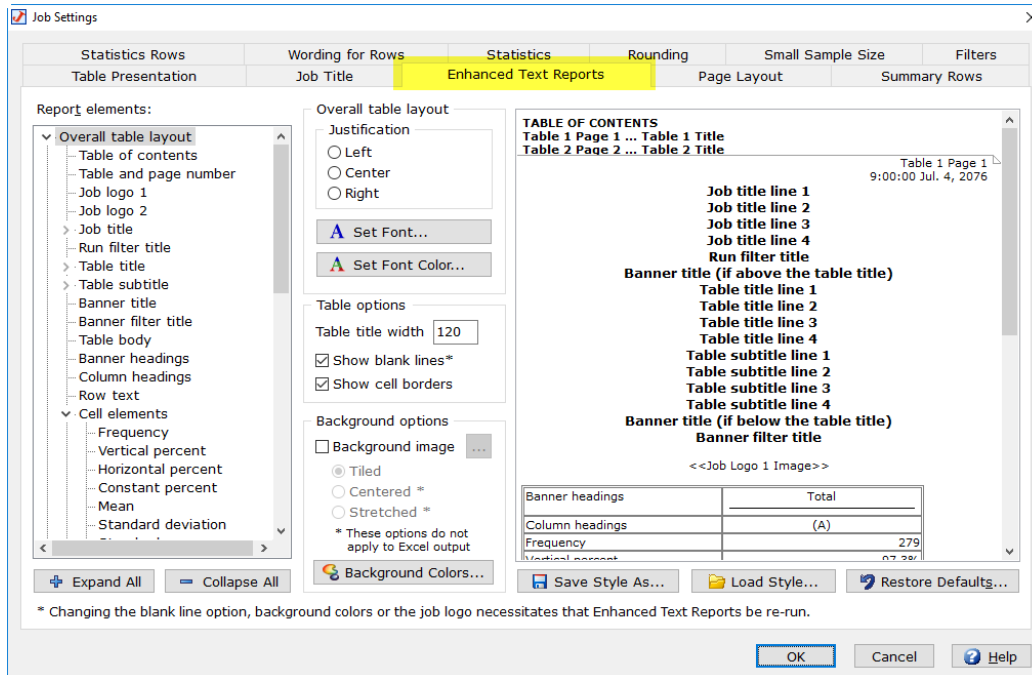


Saving these options to the *jobname.run* file is helpful when you are rerunning tables and want to use the same options previously selected.

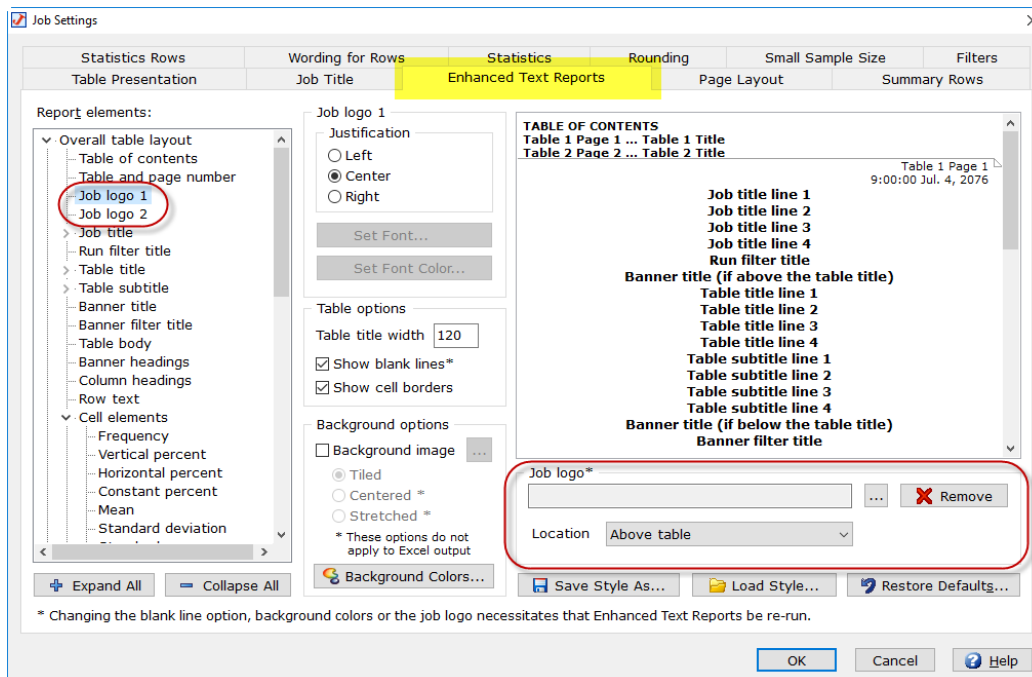
See the WinCross online **Help** topic "*Run|Tables*" for more detailed information about the *jobname.run* file and **Report viewing format** options.

## Job Logo Group Box of Enhanced Text Reports

The **Job logo** group box on the **Enhanced Text Reports** tab of **Job Settings** and **Profile Settings** is now hidden until you click on **Job logo1** or **Job logo 2** in the **Report elements** list.



This change provides more space to preview how the **Enhanced Text Report** will look when applying changes to other **Report elements**.

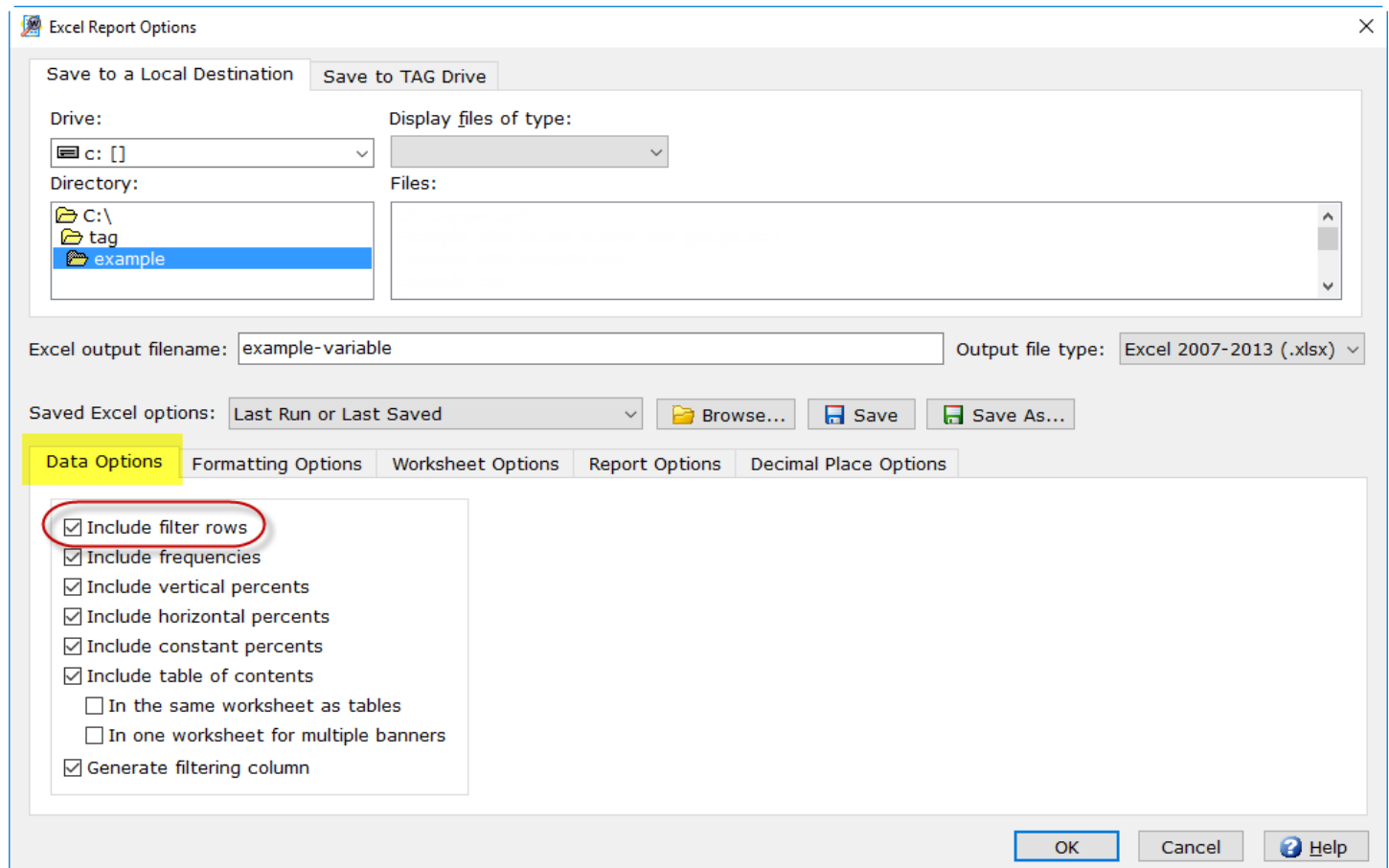


Just click on **Job logo 1** or **Job logo 2** to display the **Job logo** group box where you can add, change or remove job logos for your **Enhanced Text Reports**.

See the WinCross online **Help** topics "[Setup|Job Settings|Enhanced Text Reports](#)" and "[Setup|Profile Settings|Enhanced Text Reports](#)" for more information about using job logos with **Enhanced Text Reports**.

## Suppress Filter Rows in Excel Reports

The new **Include filter rows** option on the **Data Options** tab of **Run|Tables|Excel|Options** provides an easy way to suppress your filter rows without having to adjust table options or rerun tables.



Disabling the **Include filter rows** checkbox, will suppress the display of filter rows on your Excel report.

See the WinCross online **Help** topic "*Excel Options*" for more detailed information about this new option.



## Assign Banner Column Width by Row/Update Banner Column Width by Column

You can now assign a different banner column width by row when selecting rows to use for a new banner using the **Create Banners from Tables** option of **Setup|Banners**.

**Create Banners from Tables**

Tables (69)

To create multiple banners in a single step, simply select two or more tables in the list below:

#	Name	Table Title
1	1	Gender
2	2	Q.1 On average, how many hours per week do you spend participating in outdoor activities at
3	3	Q.2 Agreement with the following statement: I consider myself an outdoors person
4	4	Q.2 Agreement with the following statement: I wish the parks were open for longer hours

☐ Word wrap

Find a table:

Table rows (3)

TOTAL
Male
Female

Logic: GENDER (1)

Banner columns (1)

Male
------

Logic: GENDER (1)

Banner column width, in characters

By selecting one or more rows from the **Table rows** list, the **Banner column width, in characters** specified, will be applied to those rows only, once they are moved to the **Banner columns** list. This allows you to specify the width differently by row.

**Note:** The banner column width assigned on the **Create Banners from Tables** dialog only applies to **Plain Text Reports (Run|Tables|Plain text)** as the **Report viewing format** on the **Run Tables** dialog).

By selecting one or more columns from the **Banner columns** list, you can update the width for the selected columns using the new **Update Selected Columns** option.

**Create Banners from Tables**

Tables (69)

To create multiple banners in a single step, simply select two or more tables in the list below:

#	Name	Table Title
1	1	Gender
2	2	Q.1 On average, how many hours per week do you spend participating in outdoor activities at
3	3	Q.2 Agreement with the following statement: I consider myself an outdoors person
4	4	Q.2 Agreement with the following statement: I wish the parks were open for longer hours

☐ Word wrap      Find a table:       Find Next Table

Table rows (3)

TOTAL
Male
Female

Logic:  
GENDER (2)

Banner columns (3)

TOTAL
Male
Female

Logic:  
GENDER (1)

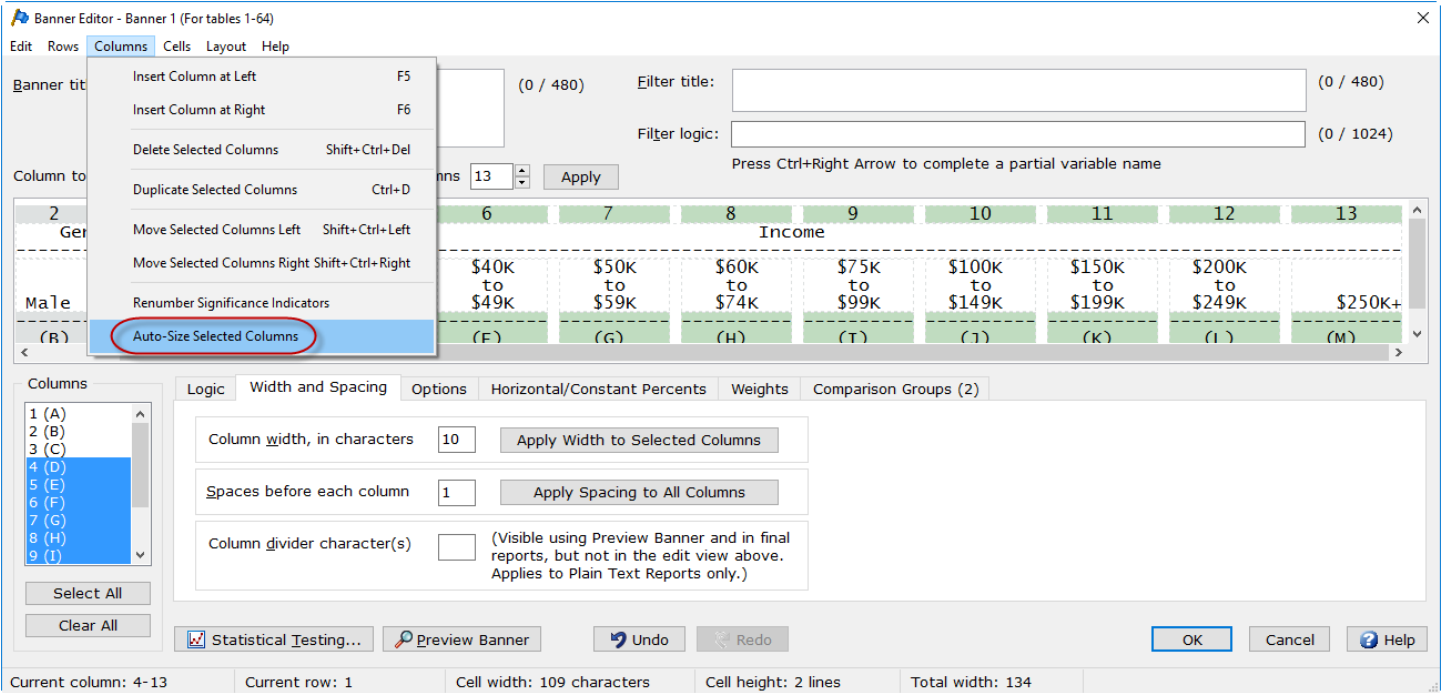
Banner column width, in characters:       Update Selected Columns      OK      Cancel      ? Help

The **Banner column width, in characters** specified is applied to the selected columns when you choose **Update Selected Columns**.

See the WinCross online **Help** topic "*Create Banners from Tables*" for more detailed information about assigning and updating banner column widths.

New Auto-Size Banner Column Option

The new **Auto-Size Selected Columns** option added to the **Columns** menu of the banner editor is a quick way to auto-size selected banner columns.

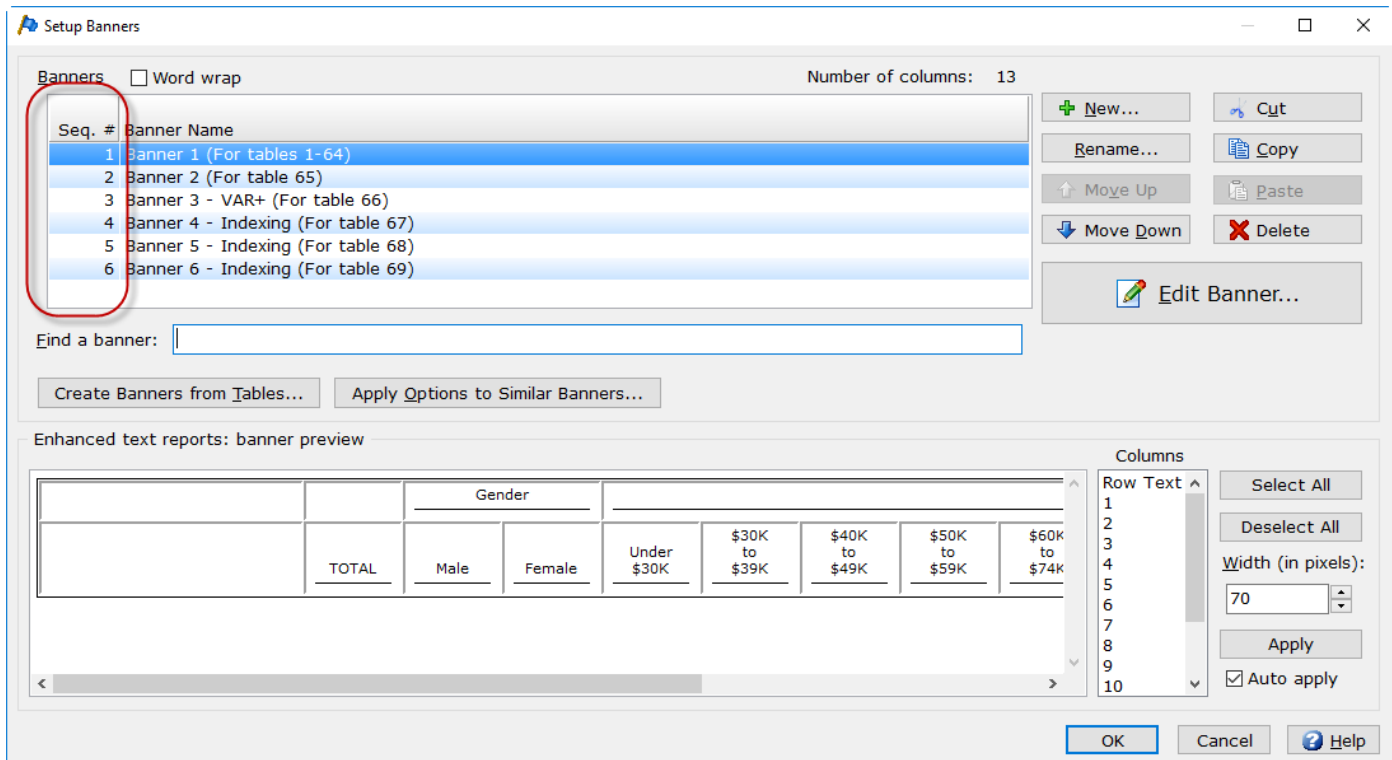


This option will auto-size to the size of the widest text in the banner column for each banner column selected.

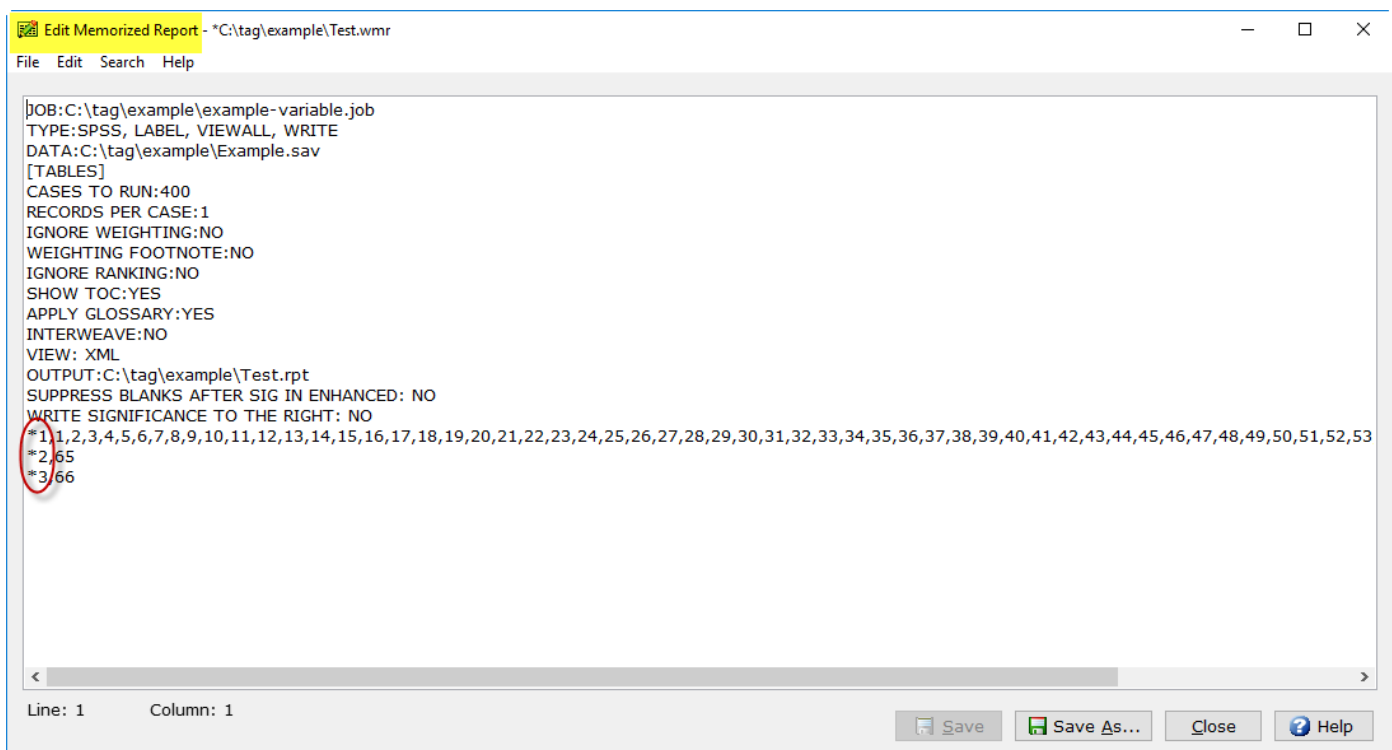
See the WinCross online **Help** topic “*Columns Menu (Edit Banner)*” for more detailed information about this new **Auto-Size Selected Columns** option.

## New Seq. # Column for Banners

We've added a **Seq. #** column for banners on the **Setup Banners** dialog to make it easier to find and edit specific banners especially in job files with many banners.



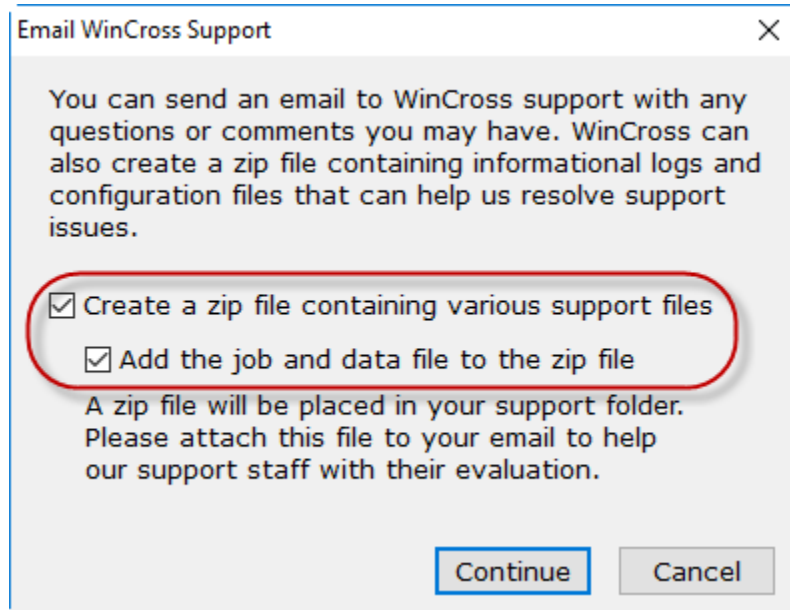
This new **Seq. #** can also be helpful when editing **Memorized Reports** as the **Seq. #** is consistent with the banner position number used in **Memorized Reports**.



See the WinCross online **Help** topics "*Banners*" and "*Memorized Reports*" for more detailed information about banners and/or **Memorized Reports**.

## Create a Zip File for Email Support

**Help|Email WinCross Support** has a new option for creating a zip file containing informational logs and configuration files that can often help with resolving support issues.



Enabling the **Add the job and data file to the zip file** option will add the currently open job, data and other related files to the zip file. Including these files can help save time and get your support question addressed more quickly.

This zip file is created in your `c:\tag\WinCross\Support` folder and can be attached to WinCross support emails ([support@analyticalgroup.com](mailto:support@analyticalgroup.com)).

See the WinCross online **Help** topic "*Creating a zip file containing various support files*" for more detailed information about this new option.

## New Significance Indicator Order Options

The **Statistics** tab of **Setup|Profile Settings/Job Settings** now offers two additional options for how significance indicators can be displayed on reports.

The screenshot shows the 'Job Settings' dialog box with the 'Statistics' tab selected. The 'Significance indicator order' section is highlighted with a red box. The options are:

- ☒ Alphabetically within each comparison group
- ☐ Alphabetically across all groups
- ☐ Order by significance level

Other visible settings include:

- Median and quartile options:** Sort order (Ascending selected, Descending), Type (Interpolated selected, Medoid).
- Statistical testing:** Means (checked), Percents (checked). Number of lines to use for significance indicators: 3. Number of significance indicators per line: 99. Delimiter to use between significance indicators: (empty).
- Scaling:** Do not scale (selected), Divide by 10, Divide by 100, Divide by 1,000, Divide by 10,000.
- Decimal places:** Central tendency: 2, Variability: 2.
- Display options:** Show dollar sign (\$), Show comma (,).
- Treatment of statistics:** Adjust standard error when weighting (selected), Use general formula for standard error (Treat weights as replicates).

You can choose between the current default of **Alphabetically within each comparison group** or the two new options of **Alphabetically across all groups** or **Order by significance level**.

See the WinCross online **Help** topics "*Profile Settings|Statistics*" or "*Job Settings|Statistics*" for more detailed information about these new options.

## Ctrl+Right Arrow Completion of Partial Variable Names

The completion of partial variable names using **Ctrl+Right Arrow** when entering job file logic now includes variables defined or declared in the **Glossary**. Job file logic can be entered in multiple places in **WinCross** and this additional shortcut can help cut down on banner and table creation time.

## Run Time Display Options

When the **Show Run time** option on the **Table Presentation** tab of **Job Settings** and **Profile Settings** is enabled, you can now choose between displaying time based on a 24-hour clock or as AM/PM.

**Job Settings**

Statistics Rows | Wording for Rows | Statistics | Rounding | Small Sample Size | Filters

Table Presentation | Job Title | Enhanced Text Reports | Page Layout | Summary Rows

**Tables**

- ☒ Show blank tables
- ☒ Center tables \*\*
- ☒ Show frequency
  - Decimal places for frequency: 0
- ☒ Show vertical percent
- ☐ Show horizontal percent
- ☐ Show constant percent
- Decimal places for V/H/C percents: 1
- ☐ Show percent sign (%)
- ☐ Show dollar sign (\$)
- ☐ Show comma (,)
- ☐ Show footnote
- ☒ Show table of contents
- Show ☒ Run date ☒ Run time
  - ☒ 24h ☐ AM/PM

**Table titles**

- ☒ Center table title
- Table title width \*\*: 120 (in characters)
- ☐ Show subtitle

**Banners**

- ☒ Center banner title \*\*
- ☒ Center banner filter title \*\*

**Table rows**

- ☐ Show blank rows
- Indent levels: 2 spaces
- Row text width \*\*: 25 (in characters)

**Blank cells**

- ☒ Show blank cell characters
- Blank cell characters: -
- Blank column characters: -
- ☒ Show blank cell characters for frequency cells only
- ☐ Show blank cell characters for all types of cells

**Table names**

- ☒ Show table name at top of page
- Table name position \*\*: ☐ Left ☐ Center ☒ Right

**Filter options**

- ☒ Show filter row
  - ☒ Show filter title on filter row
  - ☐ Show filter title below table title
    - ☒ Center table filter title
- ☒ Show frequency on filter row
- ☒ Show vertical percent on filter row
- ☐ Show horizontal percent on filter row
- ☐ Show constant percent on filter row
- ☐ Show percent sign (%) on filter row

\*\* This setting applies only to Plain Text Reports

OK Cancel Help

In addition, these **Run time** options are applied when using the **~TM** option on the **Job Title** tab of **Job Settings** and **Profile Settings**.

**Job Settings**

Statistics Rows | Wording for Rows | Statistics | Rounding | Small Sample Size | Filters

Table Presentation | Job Title | Enhanced Text Reports | Page Layout | Summary Rows

Top of page job title, Plain Text Reports and Enhanced Text Reports (34 / 480)

Arizona Parks and Recreation Study

Top of page job title justification, Plain Text Reports\*

☒ Left justify ☐ Center justify ☐ Right justify

\*The job title justification for Enhanced Text Reports can be set from the Setup|Enhanced Text Report Fonts and Colors dialog.

Bottom of page job title, Plain Text Reports and Enhanced Text Reports (55 / 480)

Prepared by: The Analytical Group, Inc.

☒ ~TN ~PN ☒ ~TM ~DA

Bottom of page job title justification, Plain Text Reports\*

☐ Left justify ☒ Center justify ☐ Right justify

\*The job title justification for Enhanced Text Reports can be set from the Setup|Enhanced Text Report Fonts and Colors dialog.

OK Cancel Help

See the WinCross online **Help** topics "**Job Settings|Table Presentation**" and "**Profile Settings|Table Presentation**" or "**Job Settings|Job Title**" and "**Profile Settings|Job Title**" for more detailed information about these additional **Run time** options.

## Compatibility with Latest Version of SPSS

WinCross 17 is compatible with SPSS version 24. For compatibility with WinCross, we recommend saving files in SPSS using **Locale (code page) encoding**.